

DO NOT COPY WITHOUT PERMISSION OF AUTHOR

Risk Assessment & Risk-Need-Responsivity: Reducing Risk Of Re-Offending Among Juvenile Justice-Involved Youth

GINA M VINCENT, PHD

Associate Professor, Umass Medical School

President, NYSAP

ELIZABETH FRITZ

Chief Juvenile Probation Officer, Lehigh County

DO NOT COPY WITHOUT PERMISSION OF AUTHOR

© 2016, NYSAP



Vignette

Ciara is a 16-year old, African-American girl charged with Aggravated Assault (F2) and Simple Assault (M1) for cutting her father with a knife during an argument between him with her and her mother. Ciara stated she called the police after she recognized her father was bleeding; however, it appears she really called police because mom has a heart conditions and was having trouble breathing not because of her father.

She has no delinquency history other than a truancy citation.

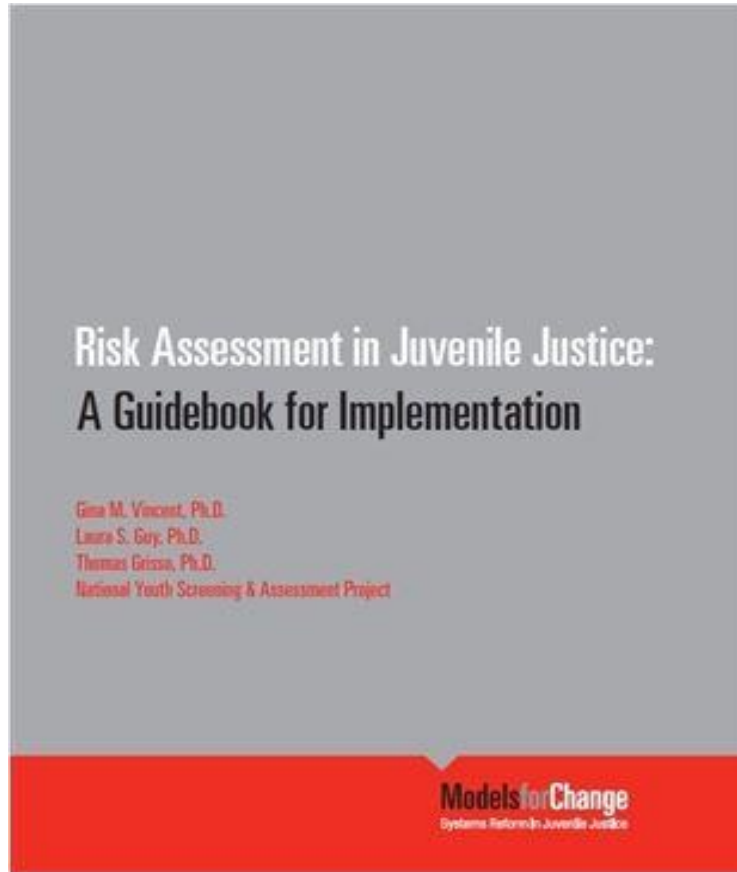
Risk-Needs-Responsivity (RNR)

Case Management

Effective and individualized case management requires valid assessment & RNR principles

- **Risk** – Match the intensity of the intervention with one's level of risk for re-offending
- **Need** – Target dynamic or changeable risk factors (aka *criminogenic needs*)
- **Responsivity** – Match the mode & strategies of services with the individual

Risk Assessment in Juvenile Justice: Guidebook to Implementation



8 Steps to Implementation

1. Getting ready
2. Establish buy-in
3. Select tool
4. Develop policies
5. Training
6. Pilot test
7. Full implementation
8. Sustainability/Data

Vincent, Grisso, & Guy (2012) Funded by
MacArthur Foundation

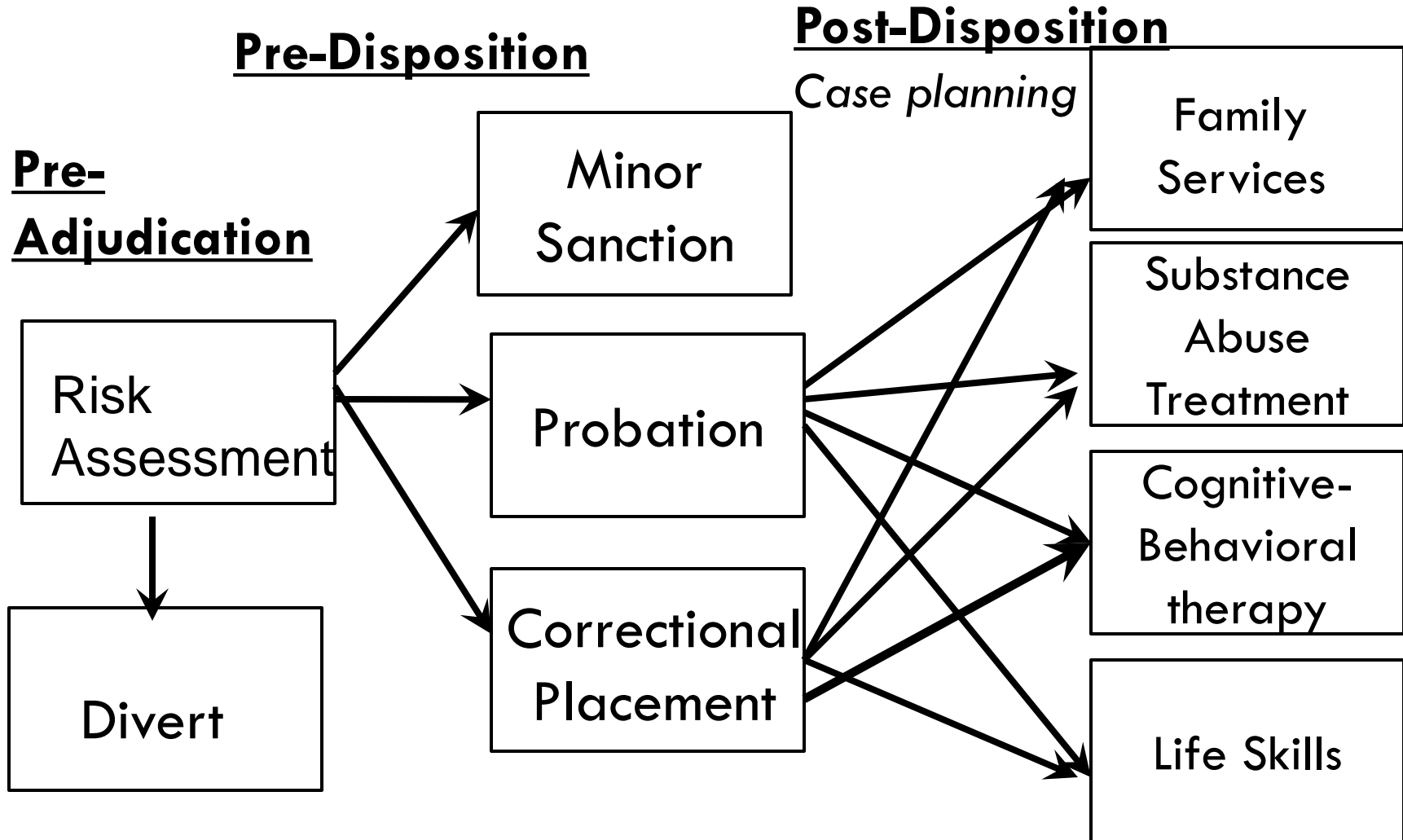
**STEP 2:
STAKEHOLDER BUY-IN
WHERE TO CONDUCT THE
ASSESSMENT**



Step 2. Obtaining & Maintaining Stakeholder Buy-In

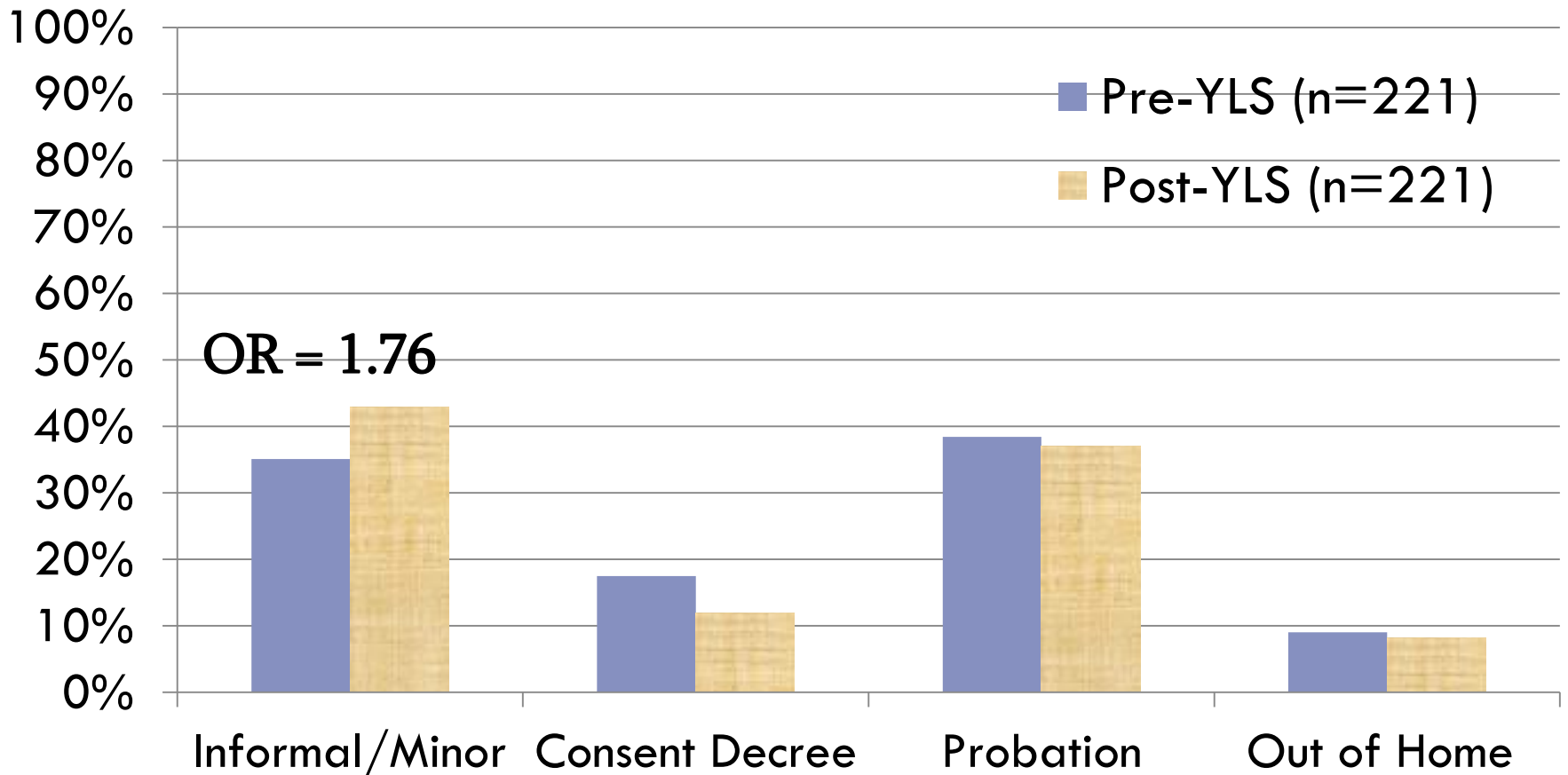
- On-going training with:
 - Administration
 - Judges
 - DA's/Public defenders
- Decide with this group where the assessment will be conducted and how it will be used

Where To Conduct The Assessment?



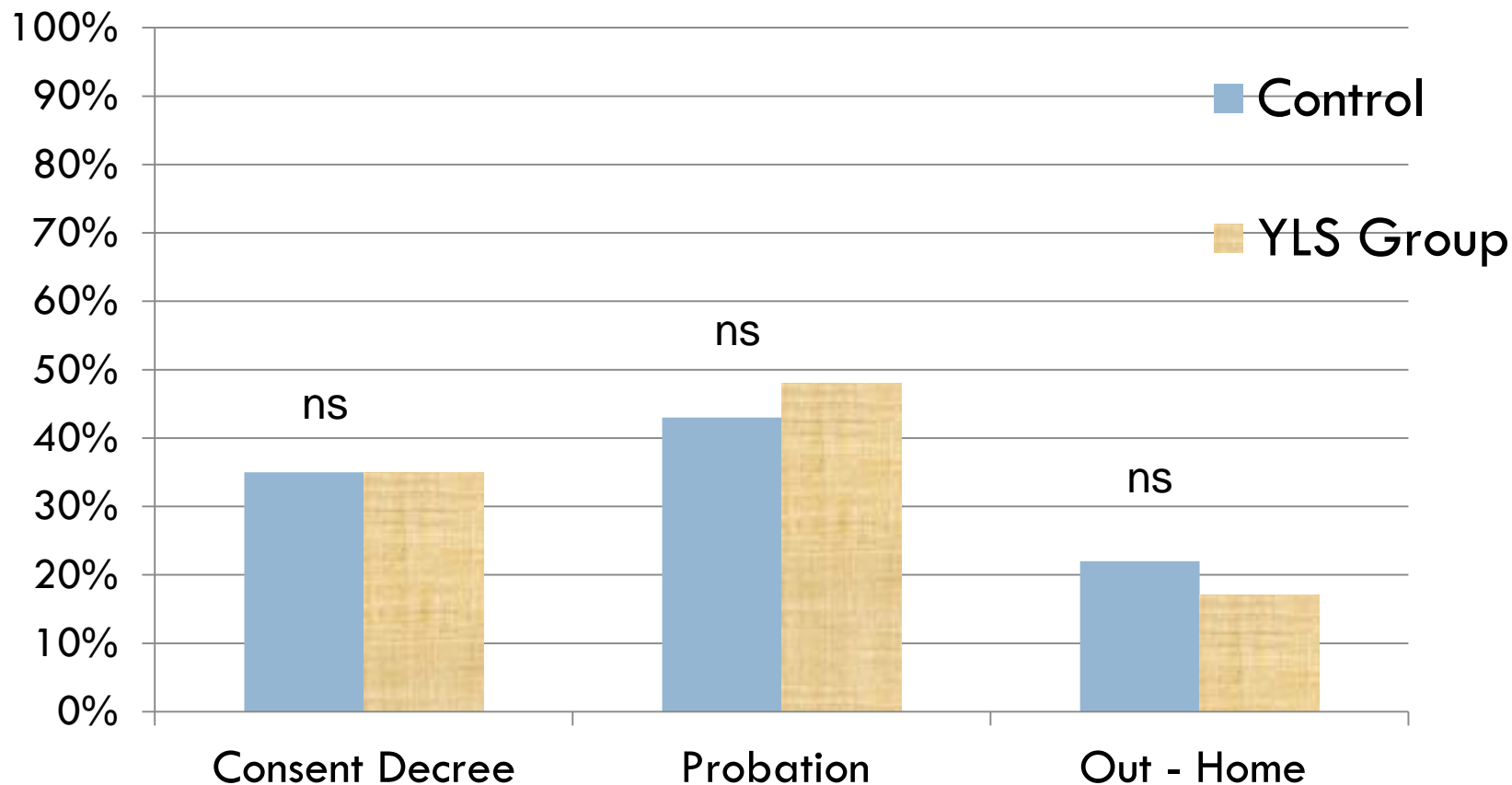
Risk Principle In Disposition Decisions:

Pre-Adjudication Site (Vincent, Guy, et al., under review)



Risk Principle In Disposition Decisions:

No Judge Buy-In (Vincent, Guy, et al., under review)



DO NOT COPY WITHOUT PERMISSION OF AUTHOR

PA Experience: Buy-In From Stakeholders

- Educating Stakeholders
- Engage from the beginning
- Ongoing
- Assist in decision making
 - ▣ Using the YLS pre-adjudication
 - Guiding disposition and possible diversion opportunities
 - ▣ Providing YLS information to provider working with youth
 - Commitment from the Court

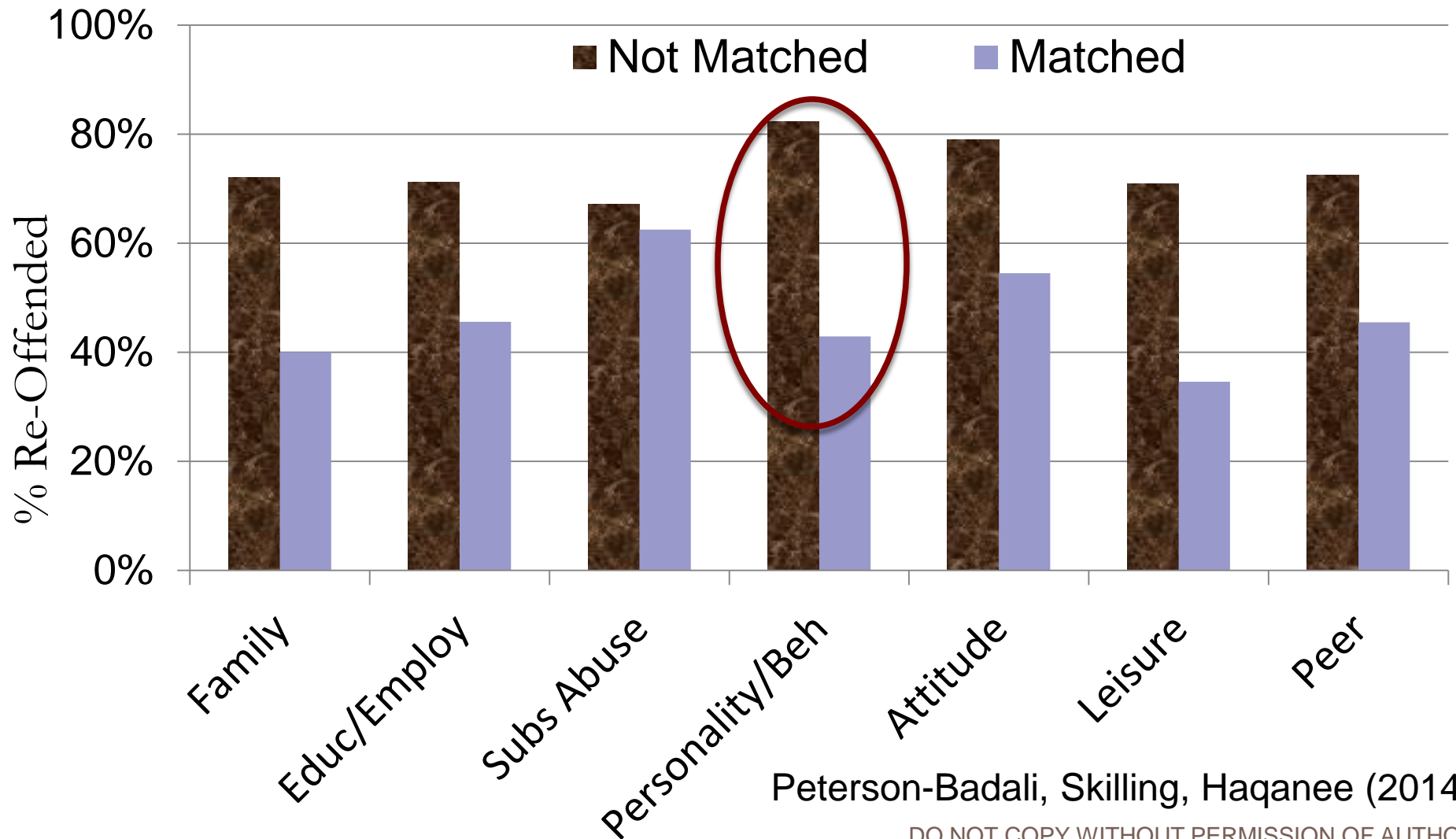
STEP 4:
POLICIES, DOCUMENTATION,
& CASE PLANNING



Step 4. Developing Policies and Procedures In Line With RNR Principles

- Pre-disposition report template
- Case plan that contains criminogenic need areas that align with the assessment & responsivity factors (such as mental health)
- Policy explaining the use of the risk assessment in case planning including:
 - Release decisions
 - Assigning level of supervision
 - How to select services in the community
- Develop a process for service-to-need matching

Prioritizing Criminogenic Needs (Service-to-Need Match & Reoffending)



Vignette

Ciara has always lived with her biological mother. Dad has been in and out of the home but has always been part of her life. Ciara and her mom were homeless for a period and got into an altercation once in the past. Mom feels as though she can control Ciara for the most part and monitors her behavior.

Ciara will be a 12th grader. She has never repeated a grade and is in regular education classes. She attended Cyber School for 6th, 7th, and half of 8th grade due to bullying. She reports that her behavior in school was ok. She was passing, and is capable of A-B work. She did have detentions for being late to school but no suspensions. She reports that she was bullied when she was younger.

Vignette (cont)

Ciara has two good friends. Both were on probation and closed in 2013. Mom said she knows and likes both girls. Ciara reports that all of her friends and acquaintances are positive. When asked about her peers at school she said she hates everyone and does not talk to anyone.

Mom states that she has no concerns regarding substance abuse with Ciara but she was smoking cigarettes a few days ago with some friends and later found out there was marijuana in it. Ciara tested positive for marijuana during her first intake and stated that she smoked yesterday but has only smoked 6 times in the last year and “it is a weekend thing.”

Ciara is happy with herself and would not change anything. She gets angry when people are disrespectful or fake. When she is angry, she will yell, curse, slam doors and throw things. She is sometimes impulsive and easily annoyed by others.

Vignette (cont)

She states that she is respectful when dealing with the police. She believes there should be rules and laws and she should follow but does not always do that. She said there is a zero percent chance she will be arrested again and is not interested in getting any help to stay out of trouble.

Ciara was hospitalized at Kidspeace for 10 days after this incident occurred. She reports being diagnosed with depression and being prescribed Lexapro. She still takes the medication, and reports feeling unhappy when she does not take medication. At times, she feels hopeless.

Ciara's Assessment Results

- Risk level = Moderate

- Criminogenic Needs
 - ▣ Attitudes/Orientation – Moderate
 - ▣ Personality/Behavior – Moderate
 - ▣ Peers – Moderate, may add services later
 - ▣ Substance Abuse?

- Potential Responsivity Factors
 - ▣ Depression

PA Experience:

Matching Services through a Case Plan

- Case Plans are written using strength-based wording in order to maximize a youth's desire to engage
- The activities follow the SMART format for moderate and high risk youth
- Completed after full and ongoing engagement of youth and family
- Departments utilize their own community-based programs as these are location specific
- Exclude programs that do not have evidence of contributing to behavior change/risk reduction

Interventions for Attitudes and Orientation Domain

One on One Supervisory Appointments

- Carey Guides
 - ▣ Empathy
 - ▣ Moral Reasoning
- The Change Companies Journals
 - ▣ Responsible Thinking
 - ▣ Responsible Behavior
- NCTI Crossroads
 - ▣ Cognitive Life Skills

Community Referral Options

- Aggression Replacement Training
- Thinking for a Change
- NCTI
- Mentoring

Example:

Need: Attitudes and Orientation

- **Goal:** Understand what triggers thinking that is harmful and develop a plan to prevent those negative triggers
- **Activities:**
 - ▣ Make a list of five people, places or things that trigger your behavior;
 - ▣ Develop a relapse plan with two people who want you to be successful; get their input; write down how those two people can support you;
 - ▣ Complete The Change Companies Journal Responsible Behavior

Example:

Need: Personality/Behavior

- Goal: Gain control of my emotions by learning and applying skills to manage my temper and avoid unnecessary conflicts
- Activities:
 - Keep a log for four weeks of every time you get angry, record the incident, the severity of your anger (1-5) and the consequences of the anger;
 - From the log, identify one or more patterns you see when you get angry and for each one describe your greatest fear about the situation;
 - Attend Thinking for a Change facilitated through JPO

Implementing Need Principle Service Matrix (partial)

Criminogenic Need Areas

	Substance Abuse	Family/ Parenting	Disruptive Beh/Person
Low risk	None	Support family to monitor youth	None
Moderate	Outpatient Individual counseling	Strengthening families Active parenting	Courage2Change Thinking for a Change
High risk	Intensive outpatient Inpatient if needed	FFT MST (if other risk factors too) Therapeutic foster care if serious	CBT ART, MRT MST Possible residential

DO NOT COPY WITHOUT PERMISSION OF AUTHOR

Risk Level

What If We Don't Have The Services?

- Increasing protective factors can also be an effective means of decreasing risk – particularly when services for criminogenic needs are limited

- Focus on the positives/strengths in addition to treating the risks
 - ▣ Pro-social activities
 - ▣ Attachment to school
 - ▣ Attachment to pro-social adults
 - ▣ Positive social support

STEP 8: DATA & SUSTAINABILITY



8. Sustainability / Data-Tracking

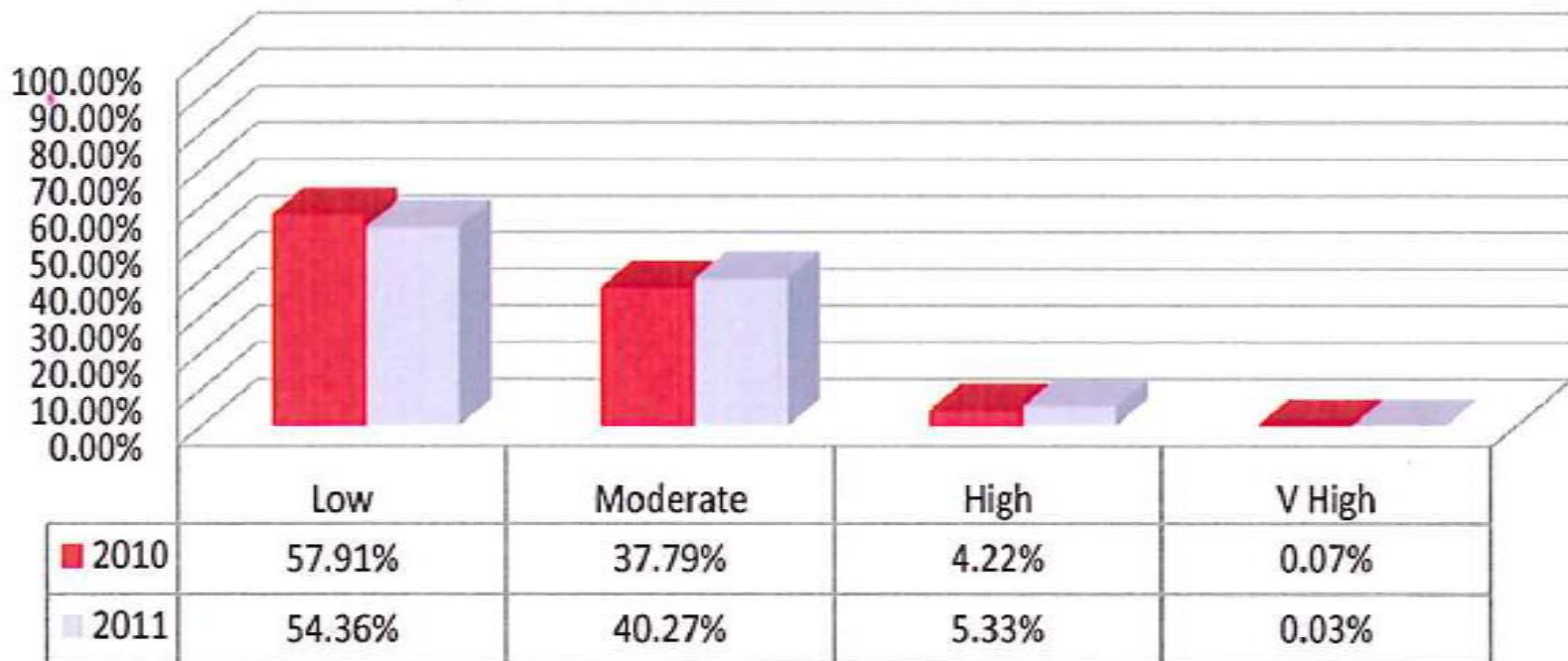
- Mandatory routine booster training – every 6 months
- Add assessments to performance reviews

- Quality Assurance
 - ▣ Making sure the assessment is done correctly
 - Inter-rater reliability
 - Supervisors ensure the service recommendations are aligned with the needs
 - Pick top need areas and no more than 3 services at one time

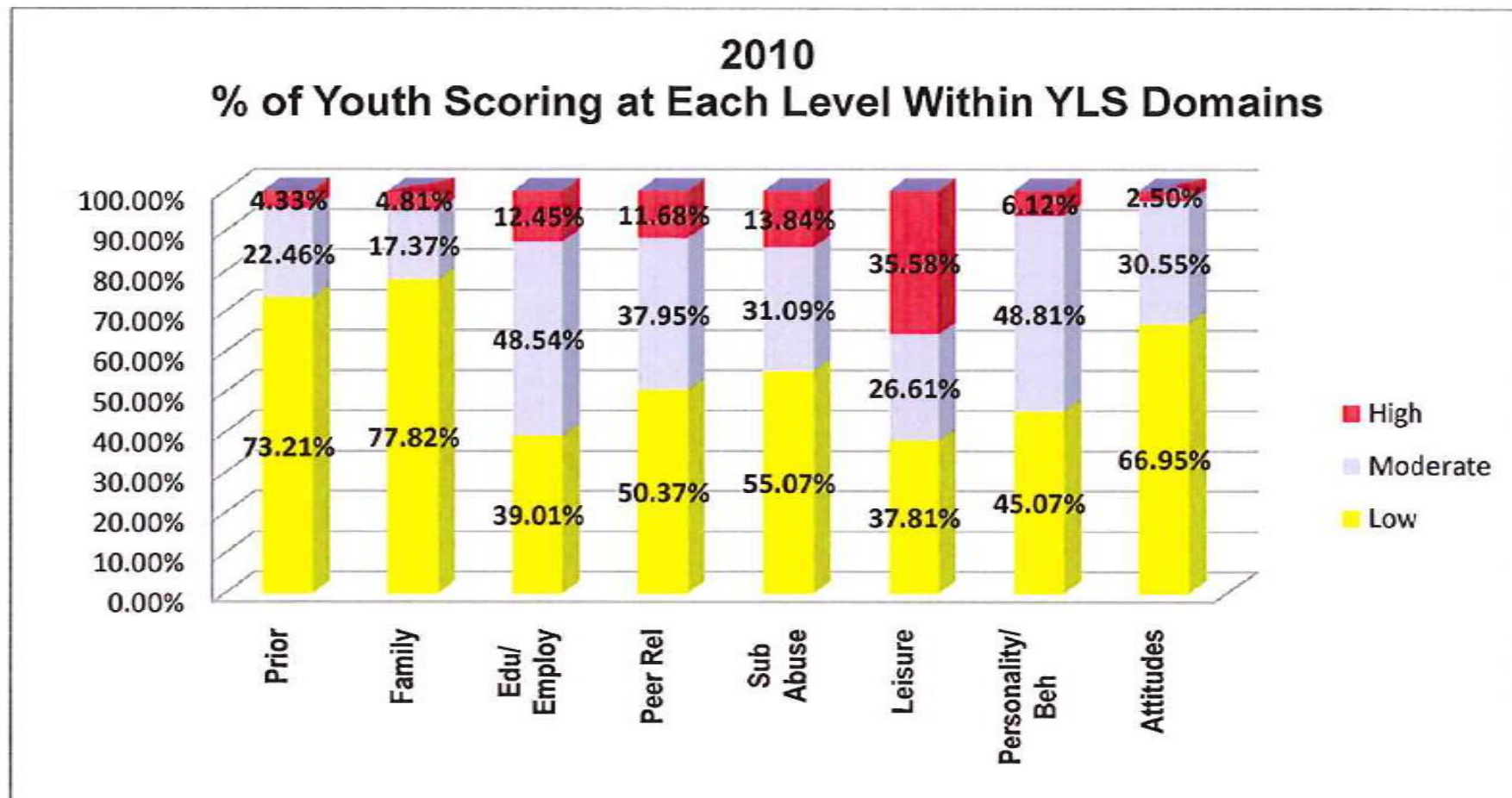
- Data tracking and reporting

Statewide Data: YLS/CMI Risk Level (implemented pre-adjudication)

Total Score Risk Level Classification
% of youth falling at each level of risk
(comparison of 2010 to 2011)



Statewide Data: YLS Need Areas

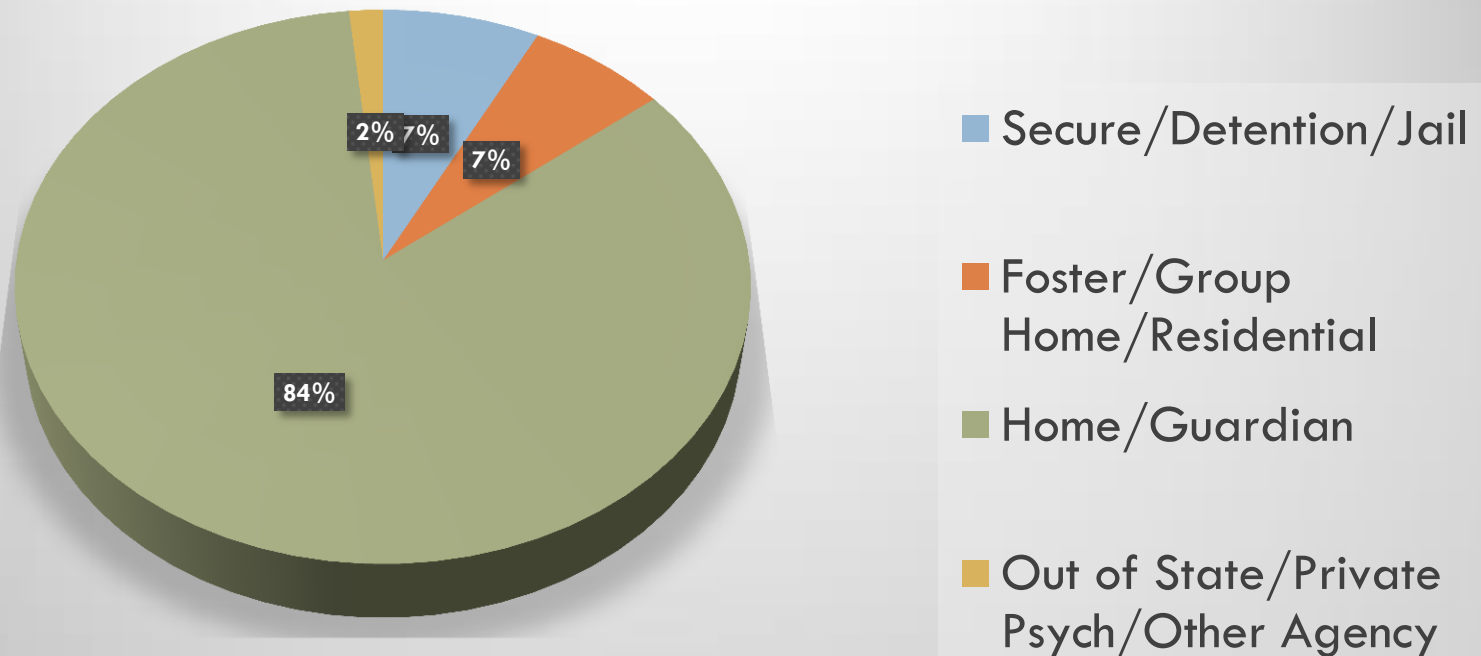


Note: No youth were scored in the Very High Range for 2010

Data Tracking Of Low Risk Youth: Louisiana Office of Juvenile Justice

Low Risk Youth

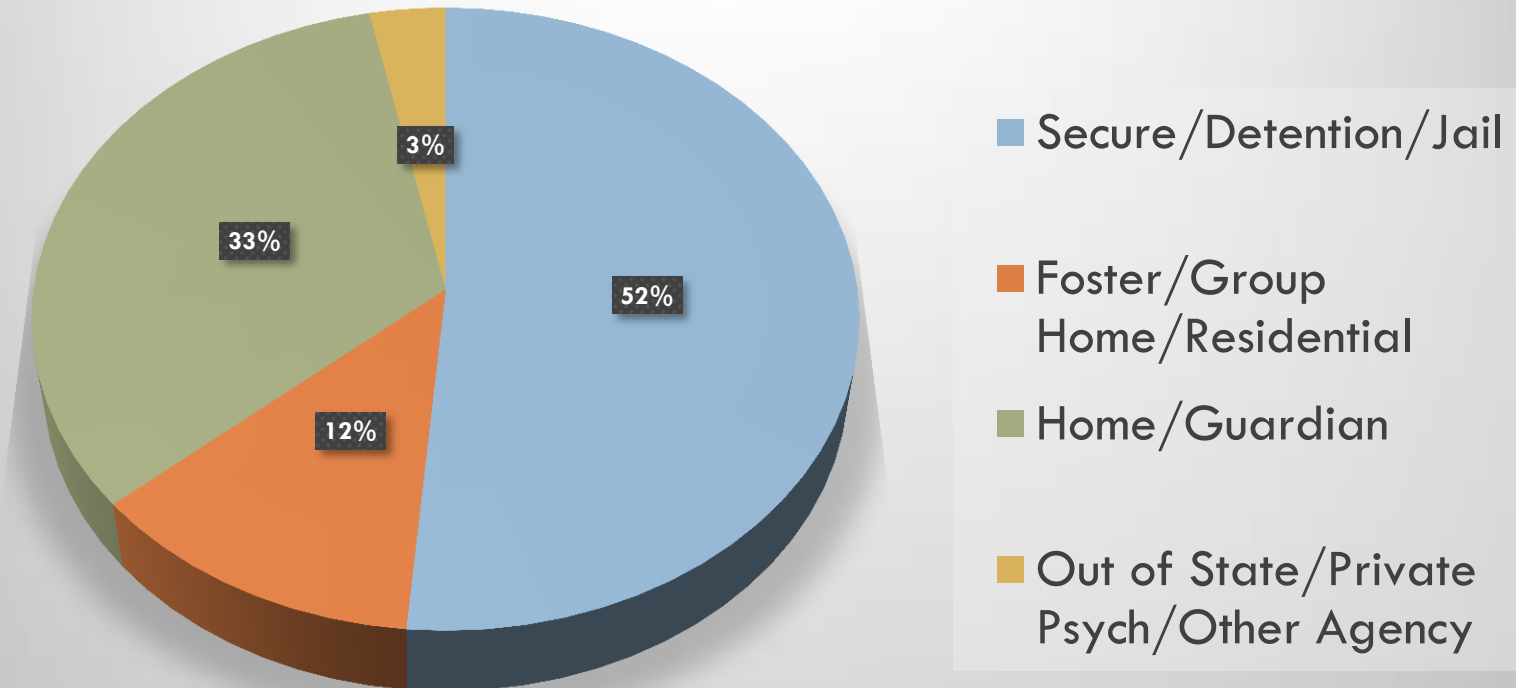
Current Population Location [Feb 2015] by Low SAVRY Summary Risk Rating (Most Recent)



Data Tracking Of High Risk Youth: Louisiana Office of Juvenile Justice

High Risk Youth

Current Population Location [Feb 2015] by High SAVRY Summary Risk Rating (Most Recent)



Take Home Messages

- Risk assessment + RNR can be used to conserve resources and improve outcomes for youth while still protecting public safety
- Implement the need principle while also considering protective factors and strengths (may help buffer lack of RNR-related services)
- **Caveat:** Quality implementation, quality assurance and buy-in from stakeholders is crucial for success
 - ▣ **Track your data**